

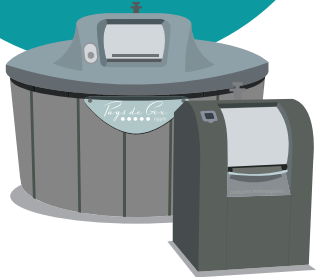
Household waste and recycling guide

Household waste collection

HOUSEHOLD WASTE IS COLLECTED IN ONE OF TWO WAYS, DEPENDING ON WHERE YOU LIVE. TO FIND OUT WHAT TYPE OF COLLECTION APPLIES TO YOUR AREA, CONTACT OUR SERVICES.



Place your bags



In a nearby CONTAINER

Near you. You need your waste badge* to open it.

40 litres MAX

*See following page to get your waste badge.

A few simple rules to follow!



Please do not leave bags, bulky items or cardboard boxes next to the container; doing so may result in a fine and clean-up costs.



IN A WHEELIE BIN

To find out the collection days for your area, scan the code!



Do you not yet have a household waste bin?
Do you want a different size bin?
Fill in the form on [monservicedechets.com](https://www.monservicedechets.com)
or call 04 50 40 95 00



A bin which has been overfilled or with bags next to it counts as 2 collections.



Please put your bin out the evening before your collection day.

The waste badge is a must!

It gives access to:

- 1 **The household waste bins** if your property uses this collection method.
- 2 **The household waste recycling centres.**
You'll be unable to access them without a badge.



2
badges
per
household*

TO GET YOUR WASTE BADGES:

 04 50 40 95 00



monservicedechets.com

**It is your personal badge and must not be lent to others.*

Sorting your waste

LET'S ACT TO REDUCE OUR HOUSEHOLD WASTE: SORTING YOUR WASTE IS EASY!

PACKAGING,
✓ EMPTY
✓ EVEN IF DIRTY
✓ SEPARATED

THE YELLOW BIN IS FOR

ALL PAPER AND ALL PACKAGING



Newspapers and magazines



Plastic packaging



Letters, envelopes and other papers



Paper and cardboard packaging



Metal packaging



Large cardboard boxes to be taken to the waste recycling centre



The old blue bins can still be used! they are gradually being replaced by yellow bins.

THE GREEN BIN IS FOR

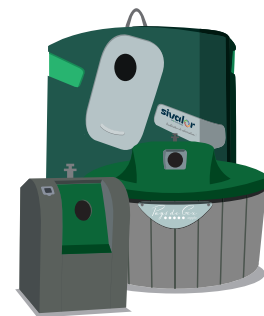
ALL GLASS PACKAGING



Glass bottles



Glass jars and bottles



Inter-commune Waste Recovery
Syndicate



All the rules for sorting and recycling in your area can be found on:

monservicedechets.com



There are numerous recycling points near you. If you haven't found one yet, take a look at the map here!



HOME COMPOSTING, IN YOUR GARDEN OR APARTMENT

Plant-based food waste and garden waste can be composted. Pays de Gex Agglo provides one free wooden composter or indoor worm composter per household. To request one, fill in the form on monservicedechets.com or call 04 05 99 12 01.

Sorting your waste



BULKY ITEMS

Anything that can't be given to the Ressourcerie or taken back by a shop should be taken to the waste recycling centre.

ALLO ENCOMBRANTS

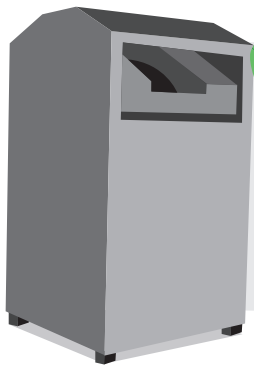
If you don't have a suitable vehicle to transport large or bulky items: **call Allo Encombrants** on 04 50 20 65 86. Or fill in the form on: www.monservicedechets.com. **Up to 3 items, by appointment!**



HOUSEHOLD APPLIANCES, FURNITURE, GAS CYLINDERS AND TYRES

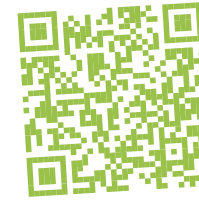
Whenever you buy an equivalent item, **remember to ask the shop to take back your old item.**

Lamps and batteries can be disposed of for free in relevant stores.



CLOTHES RECYCLING BANKS

Clothes, shoes and leather items in good condition and in a closed bag can be dropped off here. There are around twenty clothes banks in the Pays de Gex.



Find a recycling bank near you!



Find the collection points for your sharps bin here!



SHARPS WASTE

Syringes and all types of needles should be placed in a yellow "DASTRI" box provided by pharmacies. Show your prescription to your pharmacist, and you'll be given one free of charge. Once the box is full, take it back to your pharmacist.



For more information visit: dastrif.fr

0 805 69 35 36

Service gratuit
+ prix appel



DANGEROUS PRODUCTS

These should be taken to your waste recycling centre. They include batteries, paints, varnishes, chemical products (acid, solvent, etc.), fertilisers, pesticides, etc.

Donate,
buy 2nd hand

Ressorcerie

Du Pays de Gex

It gives a second life to unwanted items and helps to reduce waste, while at the same time creating jobs. **It's just next to the Ornex waste recycling centre** meaning in a single trip you can drop off your items beyond repair at the recycling centre **and unwanted items still in good condition** at the Ressorcerie.



290 rue du Perruet, ZA de la Maladière - 01210 Ornex

SHOP

To buy cheap furniture and other items.

Tuesday: 14:30 - 17:30

Wednesday and Friday: 9:00 - 12:30 and 14.00 - 17:30

Thursday: 14:00 - 17:30

Saturday: 9:00 - 17:30

the toys sold by the Ressorcerie are also available on the jeuchange.fr platform

WORKSHOP

Leave any items you no longer use but which are still in good condition. They will be checked, repaired and cleaned before being put up for sale in the shop.

Monday: 13:30 - 17:30

From Tuesday to Friday: 8:45 - 12:00 and 13:30 - 17:30

Saturday: 8:30 - 17:30

If you don't have a vehicle to transport your items, contact the Ressorcerie to organise a collection from your home.



04 81 50 02 51



ressourcieriepaysdegex@alfa3a.org



[ressourcieriepaysdegex](https://www.facebook.com/ressourcieriepaysdegex)



[ressourcierie_pays_de_gex](https://www.instagram.com/ressourcierie_pays_de_gex)

Household waste recycling centres

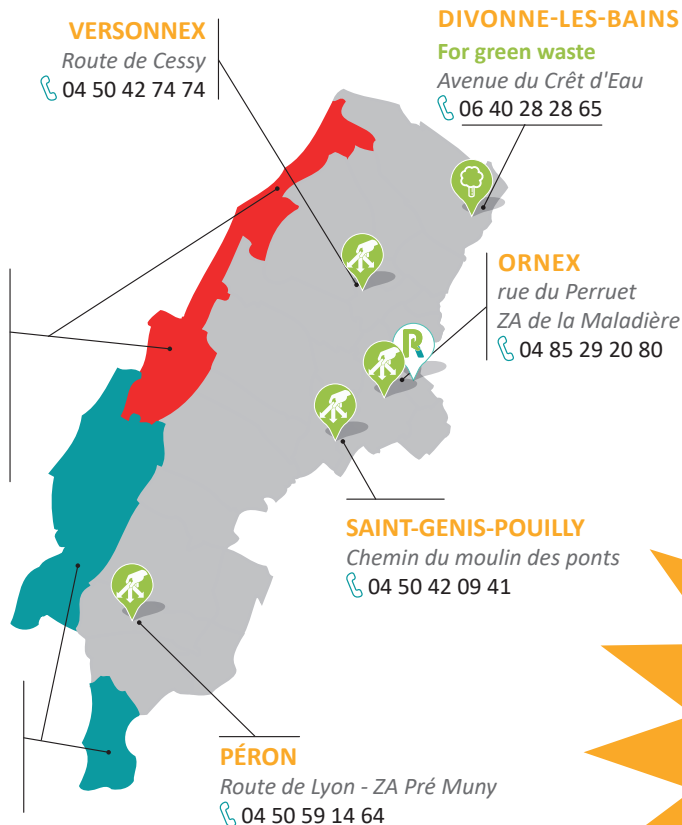
MIJOUX and LÉLEX: the mobile household recycling centre in Valserine

This mobile tip is present alternately in the 2 communes, on Saturday from 8:30 to 13:00, from April to November. 4 containers for bulky waste items, a van for dangerous household waste.

Do you live in Chézery-Forens or Léaz?

You can use the Pays Bellegardien household waste recycling centres which are closer to you. They are accessible with a card which you can order on:
ccpb01.fr/decheteries

To dispose of your large waste items, green waste, special waste, DIY waste and dangerous waste.



Household waste recycling centres opening times

NOVEMBER TO FEBRUARY

from Monday to Friday:
8:30 - 12:00 / 13:45 - 17:00
Saturday: 8:30 - 17:00
Sunday: 9:00 - 12:00

MARCH TO OCTOBER

from Monday to Friday:
8:30 - 12:00 / 13:45 - 18:00
Saturday: 8:30 - 18:00
Sunday: 9:00 - 12:00

Closed on public holidays

Don't forget your waste badge when you come to the waste recycling centre!



Billing

The waste management public service is funded by the **incentive charge which is paid by all households**. It covers the costs of collecting household waste and packaging, the running of the waste recycling centres, the sorting, recycling and reprocessing of waste.

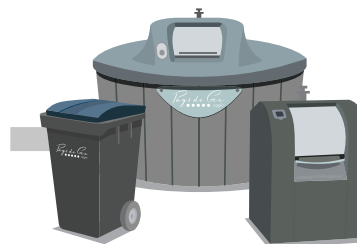
DEPENDING ON YOUR SITUATION



Shared household waste bins



billed to the building manager, passed on to residents in the service charges.



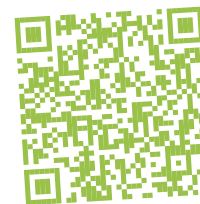
Individual bin or local container with badge access for household waste



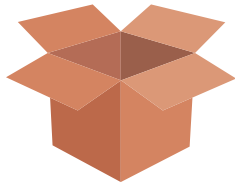
individual bill



You receive your bill twice a year. To find out more, visit: monservicedechets.com or contact the Maison des Usagers Gessiens.

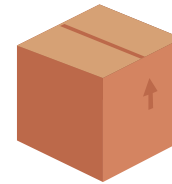


If you are moving into a property,



Notify us as soon as possible, even if it's within the same commune, in order to **open an account for the new address**, check what equipment is already there (bin and/or badges) and **activate them for future collections.**

If you are moving out of a property,



Notify us quickly, with the necessary supporting documents, **so that your account can be closed.** The bill for the outstanding balance will be sent to your new address.

The bin and/or badges should be **left in the property you're leaving.**

Contact
Us



One
number

04 50 40 95 00



Agents are available to answer your queries
at the Maison des Usagers Gessiens

200 rue Édouard Branly - Technoparc - 01630 Saint-Genis-Pouilly

Opening hours:

Monday, Tuesday, Thursday: 8:30 - 12:00 and 14:00 - 17:30

Wednesday: 8:30 - 17:30 | **Friday:** 8:30 - 17:00

Map



monservicedechets.com