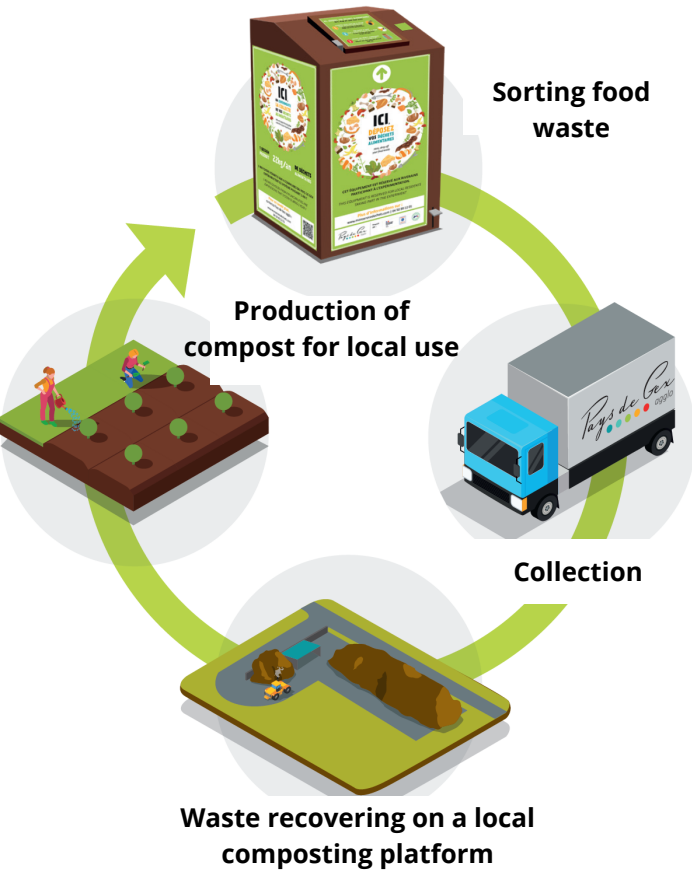


# ONCE COLLECTED, THAT BECOME YOUR WASTE FOOD?



Compost obtained with food waste is a **content-rich amendment organic matter** that improves soil fertility, retains water better (less watering) and contributes to the development of plants

## TIPS AND ADVICE



When your stock of bags is exhausted, **you can recover from Pays de Gex agglo** or when shopping for fruit and vegetables you can also **reuse the paper bags available in stores.**



*No plastic bag even said "compostable" and no packaging*



Keep the biobucket closed between each use, to avoid the presence of flies. **Rinse regularly** biobucket.



Regularly throw your bag in the collection point near you, **even if it is not filled** (one or twice a week).

## For more information :

[www.mon servicedechets.com](http://www.mon servicedechets.com)  
04 50 99 12 01  
[compostage@paysdegexagglo.fr](mailto:compostage@paysdegexagglo.fr)



*Pays de Gex*  
agglo



## PRACTICAL GUIDE



*Pays de Gex*  
agglo

Financé par :



## EXPERIMENTATION OF THE COLLECTION OF FOOD WASTE

1/4 of our household waste bins is made up of food waste. Without solution to compost them, they are incinerated while they are composed of more than 70% of water!

In 2023, Pays de Gex agglo is launching a waste collection experiment one-year food supply to 1,300 households spread over 4 municipalities of the territory.

**With this new service, you will be able to sort your food waste and thus reduce the volume of your trash can.**

**A kit consisting of a biobucket and 100 bags in kraft paper has been given to you.**

The collection terminal intended to receive your food waste is located near your home. It opens with your waste badge which has been specially activated for you as part of the experiment.

Find the nearest station!



[www.monservicedechets.com](http://www.monservicedechets.com)

## SORT YOUR WASTE FOOD, HOW IT WORKS ?



1

Unfold the bag with the reinforcement cardboard at the bottom. Place the bag in the biobucket



2

Dispose of your food waste according to the instructions



3

Take your waste badge and drop off your kraft bag, tightly closed, with your waste at the collection point near you

## ALL FOOD WASTE ARE ACCEPTED :

**PREPARATIONS OF A MEAL**



*Peelings fruit and vegetables, shells eggs*

**REMAINS OF A MEAL**



*Small bones and seashells in small quantity, meats and pisces, meal leftovers*

**END OF MEAL**



*Bags of tea, coffee grounds and filters or coffee pods paper*

